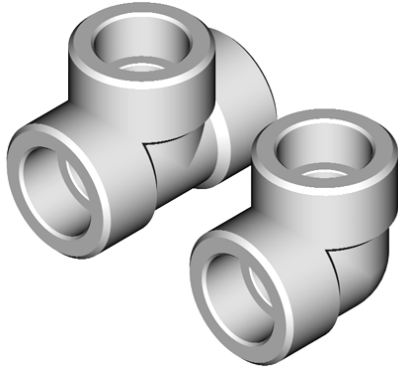




扬中市科普仪表电器成套厂
0511-88523863 www.cnkepu.net

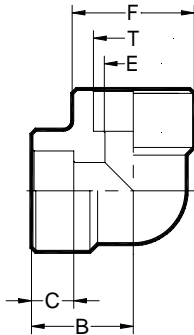
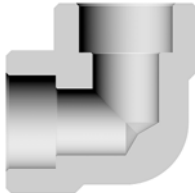


钢管插焊式管接头

A 符合 ASME B16.11 承插焊管件尺寸规范

- 尺寸符合 Pipe 要求
- 压力 3000、6000、9000Psi
- 制造材料：304、316
- 管子尺寸：英寸 1/4 至 3 in、毫米 6-100MM
- 尺寸 E 可能会根据管子的壁厚不同而改变
- 毫米尺寸可能会修改

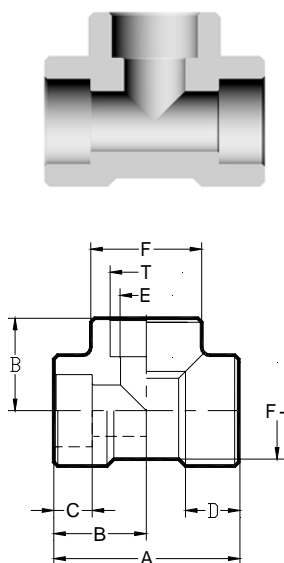
插焊式弯通中间接头



管子尺寸 - Pipe			基本订购号	其它尺寸 (3000Psi)						
IN	MM	T+0.4		E	F	B	C	F-		
1/8	10.28	10.7	-2SW.P-L3	7.6	17.1	20.5	9.5	12.4		
1/4	13.71	14.1	-4SW.P-L3	10.0	21.7	20.5	9.5	16.0		
3/8	17.14	17.5	-6SW.P-L3	13.3	25.5	23.0	9.5	19.7		
1/2	21.33	21.7	-8SW.P-L3	16.6	31.1	25.0	9.5	24.0		
3/4	26.67	27.1	-12SW.P-L3	21.7	36.9	31.5	12.5	29.5		
1	33.40	33.8	-16SW.P-L3	27.4	45.2	35.0	12.5	36.6		
1.1/4	42.16	42.5	-20SW.P-L3	35.8	54.7	39.5	12.5	45.6		
1.1/2	48.26	48.6	-24SW.P-L3	41.6	61.4	44.5	12.5	51.8		
2	60.32	61.0	-32SW.P-L3	53.3	75.0	54.0	16.0	64.3		
2.1/2	73.02	73.7	-48SW.P-L3	64.2	91.1	57.0	16.0	78.2		
3	88.90	89.7	-48SW.P-L3	79.4	108.7	73.0	16.0	94.6		
6000Psi										
1/8	10.28	10.7	-2SW.P-L6	4.8	18.5	20.5	9.5			
1/4	13.71	14.1	-4SW.P-L6	7.1	23.3	23.0	9.5			
3/8	17.14	17.5	-6SW.P-L6	9.9	27.5	25.0	9.5			
1/2	21.33	21.7	-8SW.P-L6	12.5	33.7	28.5	9.5			
3/4	26.67	27.1	-12SW.P-L6	16.3	41.1	35.0	12.5			
1	33.40	33.8	-16SW.P-L6	21.5	49.6	39.5	12.5			
1.1/4	42.16	42.5	-20SW.P-L6	30.2	58.3	44.5	12.5			
1.1/2	48.26	48.6	-24SW.P-L6	34.7	66.4	50.5	12.5			
2	60.32	61.0	-32SW.P-L6	43.6	82.8	57.0	16.0			
9000Psi										
1/2	21.33	21.7	-8SW.P-L9	7.2	40.3	35.0	9.5			
3/4	26.67	27.1	-12SW.P-L9	11.8	46.7	41.0	12.5			
1	33.40	33.8	-16SW.P-L9	16.0	56.6	44.5	12.5			
1.1/4	42.16	42.5	-20SW.P-L9	23.5	66.7	47.5	12.5			
1.1/2	48.26	48.6	-24SW.P-L9	28.7	74.0	50.5	12.5			
2	60.32	61.0	-32SW.P-L9	38.9	88.6	70.0	16.0			

A. 符合 ASMEB16.11 承插焊管件 3-2 (Pipe 管)

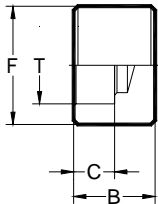
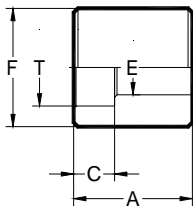
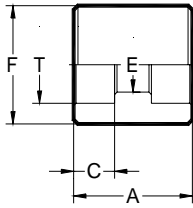
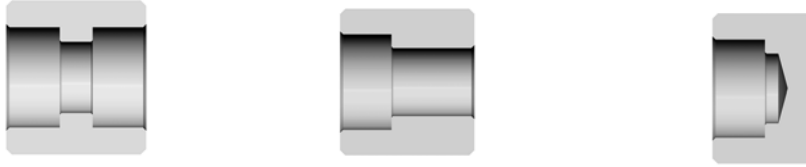
插焊式三通中间接头



管子尺寸 - Pipe			基本订购号	其它尺寸 (3000Psi)					
IN	MM	T+0.4		E	F	A	B	C	F-
1/8	10.28	10.7	-2SW.P-T3	7.6	17.1	41.0	20.5	9.5	12.4
1/4	13.71	14.1	-4SW.P-T3	10.0	21.7	41.0	20.5	9.5	16.0
3/8	17.14	17.5	-6SW.P-T3	13.3	25.5	46.0	23.0	9.5	19.7
1/2	21.33	21.7	-8SW.P-T3	16.6	31.1	50.0	25.0	9.5	24.0
3/4	26.67	27.1	-12SW.P-T3	21.7	36.9	63.0	31.5	12.5	29.5
1	33.40	33.8	-16SW.P-T3	27.4	45.2	70.0	35.0	12.5	36.6
1.1/4	42.16	42.5	-20SW.P-T3	35.8	54.7	79.0	39.5	12.5	45.6
1.1/2	48.26	48.6	-24SW.P-T3	41.6	61.4	89.0	44.5	12.5	51.8
2	60.32	61.0	-32SW.P-T3	53.3	75.0	108.0	54.0	16.0	64.3
2.1/2	73.02	73.7	-48SW.P-T3	64.2	91.1	114.0	57.0	16.0	78.2
3	88.90	89.7	-48SW.P-T3	79.4	108.7	146.0	73.0	16.0	94.6
6000Psi									
1/8	10.28	10.7	-2SW.P-T6	4.8	18.5	41.0	20.5	9.5	
1/4	13.71	14.1	-4SW.P-T6	7.1	23.3	46.0	23.0	9.5	
3/8	17.14	17.5	-6SW.P-T6	9.9	27.5	50.0	25.0	9.5	
1/2	21.33	21.7	-8SW.P-T6	12.5	33.7	57.0	28.5	9.5	
3/4	26.67	27.1	-12SW.P-T6	16.3	41.1	70.0	35.0	12.5	
1	33.40	33.8	-16SW.P-T6	21.5	49.6	79.0	39.5	12.5	
1.1/4	42.16	42.5	-20SW.P-T6	30.2	58.3	89.0	44.5	12.5	
1.1/2	48.26	48.6	-24SW.P-T6	34.7	66.4	101.0	50.5	12.5	
2	60.32	61.0	-32SW.P-T6	43.6	82.8	114.0	57.0	16.0	
9000Psi									
1/2	21.33	21.7	-8SW.P-T9	7.2	40.3	70.0	35.0	9.5	
3/4	26.67	27.1	-12SW.P-T9	11.8	46.7	82.0	41.0	12.5	
1	33.40	33.8	-16SW.P-T9	16.0	56.6	89.0	44.5	12.5	
1.1/4	42.16	42.5	-20SW.P-T9	23.5	66.7	95.0	47.5	12.5	
1.1/2	48.26	48.6	-24SW.P-T9	28.7	74.0	101.0	50.5	12.5	
2	60.32	61.0	-32SW.P-T9	38.9	88.6	140.0	70.0	16.0	

A.符合 ASME B16.11 承插焊管件 3-3 (Pipe 管)

管箍、单头管箍、管堵系列产品



订购说明

单头管箍在基本订购后加 S

例：SS-8SW.T-3S

1/2 (Pipe) 管 3000Psi 的单头管箍

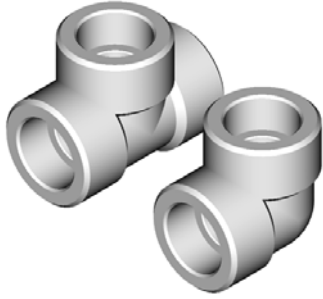
堵头管箍在基本订购后加 F

例：SS-8SW.T-3F

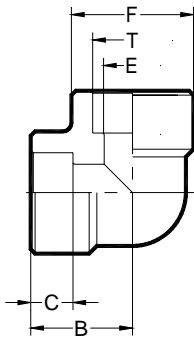
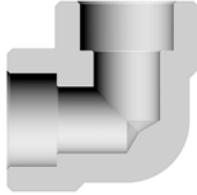
1/2 (Pipe) 管 3000Psi 的堵头

管子尺寸 - Pipe			基本订购号	其它尺寸 (3000Psi)				
IN	MM	T+0.4		E	F	A	B	C
1/8	10.28	10.7	-2SW.P-3	7.6	17.1	25.5	16.0	9.5
1/4	13.71	14.1	-4SW.P-3	10.0	21.7	25.5	16.0	9.5
3/8	17.14	17.5	-6SW.P-3	13.3	25.5	25.5	16.0	9.5
1/2	21.33	21.7	-8SW.P-3	16.6	31.1	28.5	19.0	9.5
3/4	26.67	27.1	-12SW.P-3	21.7	36.9	34.5	22.0	12.5
1	33.40	33.8	-16SW.P-3	27.4	45.2	37.5	25.0	12.5
1.1/4	42.16	42.5	-20SW.P-3	35.8	54.7	37.5	25.0	12.5
1.1/2	48.26	48.6	-24SW.P-3	41.6	61.4	37.5	25.0	12.5
2	60.32	61.0	-32SW.P-3	53.3	75.0	51.0	35.0	16.0
2.1/2	73.02	73.7	-48SW.P-3	64.2	91.1	51.0	35.0	16.0
3	88.90	89.7	-48SW.P-3	79.4	108.7	51.0	35.0	16.0
6000Psi								
1/8	10.28	10.7	-2SW.P-6	7.6	18.6	25.5	16.0	9.5
1/4	13.71	14.1	-4SW.P-6	10.0	23.3	25.5	16.0	9.5
3/8	17.14	17.5	-6SW.P-6	13.3	27.5	25.5	16.0	9.5
1/2	21.33	21.7	-8SW.P-6	16.6	33.6	28.5	19.0	9.5
3/4	26.67	27.1	-12SW.P-6	21.7	41.0	34.5	22.0	12.5
1	33.40	33.8	-16SW.P-6	27.4	49.6	37.5	25.0	12.5
1.1/4	42.16	42.5	-20SW.P-6	35.8	58.3	37.5	25.0	12.5
1.1/2	48.26	48.6	-24SW.P-6	41.6	66.4	37.5	25.0	12.5
2	60.32	61.0	-32SW.P-6	53.3	82.8	51.0	35.0	16.0
9000Psi								
1/2	21.33	21.7	-8SW.P-9	16.6	40.4	28.5	19.0	9.5
3/4	26.67	27.1	-12SW.P-9	21.7	46.7	34.5	22.0	12.5
1	33.40	33.8	-16SW.P-9	27.4	56.6	37.5	25.0	12.5
1.1/4	42.16	42.5	-20SW.P-9	35.8	66.8	37.5	25.0	12.5
1.1/2	48.26	48.6	-24SW.P-9	41.6	74.0	37.5	25.0	12.5
2	60.32	61.0	-32SW.P-9	53.3	88.7	51.0	35.0	16.0

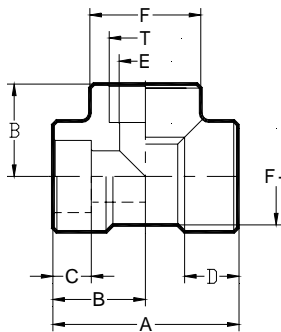
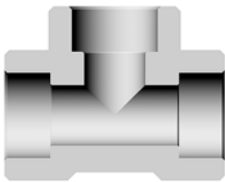
B.符合 JB/T3781 标准的钢管插焊式管接头-3-1 (Tube 管)



- 弯通尺寸符合 -JB/T3878.1、三通尺寸符合 -JB/T3878.2
- 四通尺寸符合 -JB/T3878.3、变径管箍符合 -JB/T3878.5、
- 双头管箍尺寸符合 -JB/T3878.6、堵头尺寸符合 -JB/T3878.7
- 管子尺寸符合 Tube 要求
- 压力 16.0Mpa (160bar)
- 管子尺寸：毫米 18-90MM
- 毫米尺寸可能会修改



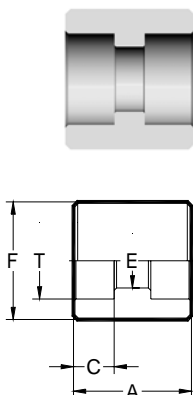
公称尺寸 - Tube 管		基本订购号	其它尺寸 (16.0Mpa)						
管子外径	T+0.4		E	F	B	C	F-	D	
18	18.5	-18SW.T-L16	10	38	32	12	29	17	
20	20.5	-20SW.T-L16	11	40	33	13	30	19	
22	22.5	-22SW.T-L16	12	43	34	14	32	21	
25	25.5	-25SW.T-L16	14	46	36	15	34	22	
28	28.5	-28SW.T-L16	16	49	38	16	36	22	
32	32.5	-32SW.T-L16	18	54	42	17	39	25	
35	35.5	-35SW.T-L16	22	59	44	17	44	25	
40	40.5	-40SW.T-L16	26	65	48	18	50	28	
42	42.5	-42SW.T-L16	28	68	50	18	53	28	
50	50.5	-50SW.T-L16	34	78	57	20	61	30	
63	64.0	-63SW.T-L16	45	93	64	22	74	34	
76	77.0	-76SW.T-L16	56	113	82	24	92	37	
90	91.0	-90SW.T-L16	65	130	92	26	104	41	



公称尺寸 - Tube 管		基本订购号	其它尺寸 (16.0Mpa)						
管子外径	T+0.4		E	F	A	B	C	F-	D
18	18.5	-18SW.T-T16	10	38	64	32	12	29	17
20	20.5	-20SW.T-T16	11	40	66	33	13	30	19
22	22.5	-22SW.T-T16	12	43	68	34	14	32	21
25	25.5	-25SW.T-T16	14	46	72	36	15	34	22
28	28.5	-28SW.T-T16	16	49	76	38	16	36	22
32	32.5	-32SW.T-T16	18	54	84	42	17	39	25
35	35.5	-35SW.T-T16	22	59	88	44	17	44	25
40	40.5	-40SW.T-T16	26	65	96	48	18	50	28
42	42.5	-42SW.T-T16	28	68	100	50	18	53	28
50	50.5	-50SW.T-T16	34	78	114	57	20	61	30
63	64.0	-63SW.T-T16	45	93	128	64	22	74	34
76	77.0	-76SW.T-T16	56	113	164	82	24	92	37
90	91.0	-90SW.T-T16	65	130	184	92	26	104	41

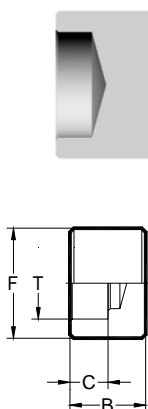
B.符合 JB/T3781 标准的钢管插焊式管接头-3-2 (Tube 管)

插焊式双头管箍



公称尺寸 - Tube 管		基本订购号	其它尺寸 (16.0Mpa)			
管子外径	T+0.4		E	F	A	C
18	18.5	-18SW.T-16	10	38	32	12
20	20.5	-20SW.T-16	11	40	34	13
22	22.5	-22SW.T-16	12	43	38	14
25	25.5	-25SW.T-16	14	46	40	15
28	28.5	-28SW.T-16	16	49	42	16
32	32.5	-32SW.T-16	18	54	46	17
35	35.5	-35SW.T-16	22	59	46	17
40	40.5	-40SW.T-16	26	65	48	18
42	42.5	-42SW.T-16	28	68	48	18
50	50.5	-50SW.T-16	34	78	58	20
63	64.0	-63SW.T-16	45	93	64	22
76	77.0	-76SW.T-16	56	113	68	24

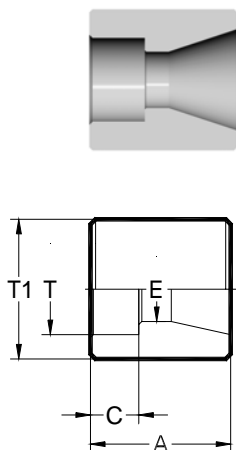
插焊式堵头



公称尺寸 - Tube 管		基本订购号	其它尺寸 (16.0Mpa)			
管子外径	T+0.4		E	F	B	C
18	18.5	-18SW.T-16F	10	38	22	12
20	20.5	-20SW.T-16F	11	40	23	13
22	22.5	-22SW.T-16F	12	43	25	14
25	25.5	-25SW.T-16F	14	46	26	15
28	28.5	-28SW.T-16F	16	49	27	16
32	32.5	-32SW.T-16F	18	54	28	17
35	35.5	-35SW.T-16F	22	59	29	17
40	40.5	-40SW.T-16F	26	65	31	18
42	42.5	-42SW.T-16F	28	68	31	18
50	50.5	-50SW.T-16F	34	78	34	20
63	64.0	-63SW.T-16F	45	93	37	22
76	77.0	-76SW.T-16F	56	113	42	24

B.符合 JB/T3781 标准的钢管插焊式管接头 3-3 (Tube 管)

插焊转对焊变径接头



公称尺寸 Tube 管	基本订购号	其它尺寸 (16.0Mpa)					
		E	T+0.5	T1-0.5	A	C	
18	28	-SW18R-28MM	10	18.4	28	23	12
	32	-SW18R-32MM			32	24	
	35	-SW18R-35MM			35	24	
	40	-SW18R-40MM			40	26	
	42	-SW18R-42MM			42	26	
	50	-SW18R-50MM			50	29	
	63	-SW18R-63MM			63	35	
	76	-SW18R-76MM			76	39	
	90	-SW18R-90MM	90	42			
20	32	-SW20R-32MM	11	20.4	32	24	13
	35	-SW20R-35MM			35	24	
	40	-SW20R-40MM			40	26	
	42	-SW20R-42MM			42	26	
	50	-SW20R-50MM			50	29	
	63	-SW20R-63MM			63	35	
	76	-SW20R-76MM			76	39	
		90			-SW20R-90MM	90	
22	35	-SW22R-35MM	12	22.4	35	24	14
	40	-SW22R-40MM			40	24	
	42	-SW22R-42MM			42	24	
	50	-SW22R-50MM			50	29	
	63	-SW22R-63MM			63	35	
	76	-SW22R-76MM			76	39	
		90			-SW22R-90MM	90	
25	40	-SW25R-40MM	14	25.4	40	26	15
	42	-SW25R-42MM			42	26	
	50	-SW25R-50MM			50	29	
	63	-SW25R-63MM			63	35	
	76	-SW25R-76MM			76	39	
		90			-SW25R-90MM	90	
28	42	-SW28R-42MM	16	28.4	42	26.2	16
	50	-SW28R-50MM			50	35	
	63	-SW28R-63MM			63	39	
	76	-SW28R-76MM			76	42	
		90			-SW28R-90MM	90	
32	50	-SW32R-50MM	18	32.5	50	35	17
	63	-SW32R-63MM			63	39	
	76	-SW32R-76MM			76	42	
		90			-SW32R-90MM	90	
35	63	-SW35R-63MM	22	35.5	63	39	17
	76	-SW35R-76MM			76	42	
		90			-SW35R-90MM	90	
40	76	-SW40R-76MM	26	40.5	76	42	18
		90			-SW40R-90MM	90	
42	90	-SW42R-90MM	28	42.5	90	42	18
50	90	-SW50R-90MM	34	50.5	90	42	20

扬中市科普仪表电器成套厂
0511-88523863
www.cnkepu.net